

江阴市炜仁铝业有限公司

Jiangyin Weiren Aluminum Industry Co., LTD



中国·江苏·江阴





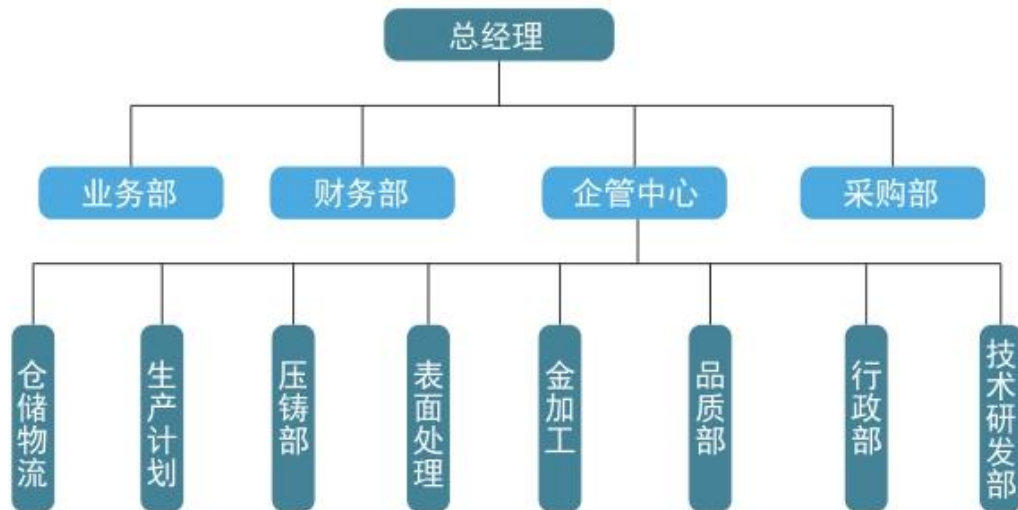
总经理：倪宏峰

从事铝合金熔炼与铸造三十多年，在高压、低压、重力、挤压等各种铸造工艺的改进与创新方面潜心研究，秉承一辈子只做一件事情，并把它做到极致的理念，实现人生价值。

使命

助力行业创新发展，以高品质为客户创造价值。

0 组织结构 ORGANIZATION STRUCTURE



产品稳步占领国内市场、不断开拓国际市场



目录

CONTENTS

01

企业概述

Enterprise Overview

02

过程控制

Product Process

03

合作伙伴

04

企业荣誉



SECTION · 01

企业概述

Overview of the enterprise

企业概述

● 我司是一家集研发、设计、制造、销售于一体的民营企业！有近40年的生产制造经验，对铝合金铸造有着深刻的理解和创新理念。因业务量增加，公司不断扩大，并于2012年9月在江阴霞客镇璜塘工业区建立新厂房；占地面积20亩，建筑面积2万多平方米。

● Our company is a private enterprise that integrates research and development, design, manufacturing, and sales! With nearly 40 years of production and manufacturing experience, I have a profound understanding and innovative concept of aluminum alloy casting. Due to the increase in business volume, the company continued to expand and established a new factory in Huangtang Industrial Zone, Xiake Town, Jiangyin in September 2012; Covering an area of 20 acres, with a construction area of over 20000 square meters.

● 公司2018年通过ISO9001质量管理体系认证，2023年通过了IATF16949-2016汽车行业的质量管理体系认证，先进的生产设备、完善的检测仪器以及全面导入的质量管理体系控制系统，为产品的稳定及可控性、追溯性等提供了有力的支撑！

● The company passed the ISO9001 quality management system certification in 2018 and the IATF16949-2016 quality management system certification in the automotive industry in 2023. With advanced production equipment, complete testing instruments, and a comprehensive quality management system control system, it provides strong support for product stability, controllability, traceability, and more!

企业概述 ..

- 公司拥有一批高素质的管理、研发团队、技术骨干及经验丰富的操作人员。拥有不同吨位的高压压铸机、低压铸造机、重力铸造机；热处理设备、CNC数控加工中心、精密数控机床、抛丸流水线、涂装流水线等先进的设备；拥有较为完善的检测仪器，如德国斯派克光谱分析仪、拉力试验机、三坐标测量仪、X-RAY探测器、金相、二次元等。公司产品涉及多个领域，如游艇配件、医疗器具设备、风力设备配件、拉线机配件、滑板车配件、电动自行车车配件等，特别在电动摩托车配件、燃油摩托车配件和新能源汽车配件方面有深厚的底蕴，生产的轮毂及相关产品均处同行业领先水平，并且可以满足不同客户的定制化需求！

- The company has a group of high-quality management, research and development teams, technical backbone, and experienced operators. Having high-pressure die-casting machines, low-pressure casting machines, and gravity casting machines of different tonnage; Advanced equipment such as heat treatment equipment, CNC machining centers, precision CNC machine tools, shot blasting assembly lines, painting assembly lines, etc; It has relatively complete detection instruments, such as German Spike optical analyzer, tensile testing machine, CMM, X-RAY detector, metallography, anime, etc. Our company's products cover multiple fields, such as yacht accessories, medical equipment, wind power equipment accessories, wire drawing machine accessories, scooter accessories, electric bicycle accessories, etc. We have a deep foundation in electric motorcycle accessories, fuel motorcycle accessories, and new energy vehicle accessories. The wheels and related products we produce are at the leading level in the industry and can meet the customized needs of different customers!



SECTION · 02

产品过程控制

Product process control

产品过程控制 . Product Process Control.

熔铝、精炼工序 Aluminum melting and refining processes



优秀的产品，离不开高品质的原材料，故我司对原材料供应商的筛选及材料都有严格的控制流程。

Excellent products cannot be separated from high-quality raw materials, so our company has strict control processes for selecting raw material suppliers and materials.

合金元素添加 Addition of alloying elements

确保产品精准配料，一律按标准执行及除气必须形成记录，且有品控人员签字

Ensure accurate ingredients for the product, strictly follow the standards and remove air, and record must be kept with quality records



光谱元素分析 Spectral elemental analysis

根据实测元素含量，比对产品所需牌号，进行微量调整，达到标准为止，并保留原始表单3年备查。

compares the required grade of the product based on the measured element content, and makes minor adjustments until the standard is met. The original form is retained for 3 years for future reference.

德国斯派克光谱分析仪 German Spike spectrometer

先进的检测仪器，对检测元素含量及对后续的产品机械性能起到至关重要的作用

Advanced detection instruments play a crucial role in detecting element content and subsequent mechanical properties of products



样块的保留 Retention of sample blocks

为便于产品核查及追溯，必须保留样块3年
For the convenience of product verification and traceability, the sample block must be retained for 3 years



产品过程控制..

Product Process Control..

高压压铸、低压压铸、重力浇铸工序

High pressure die casting, low pressure die casting, and gravity casting processes



高压压铸区
High pressure die-casting area



重力铸造区
Gravity casting area



低压压铸区
Low pressure die-casting area

热处理工序 Heat treatment process

配套的硬件设备，是保证产品性能的首要条件，同时也能满足客户的不同需求

The supporting hardware equipment is the primary condition to ensure product performance, while also meeting the different needs of customers



固溶炉 Solid solution furnace



时效炉 Aging furnace

产品过程控制... Product Process Control...

热处理检验工序 Heat treatment inspection process

配套的硬件设备，是保证产品性能的首要条件，同时也能满足客户的不同需求

The supporting hardware equipment is the primary condition to ensure product performance, while also meeting the different needs of customers



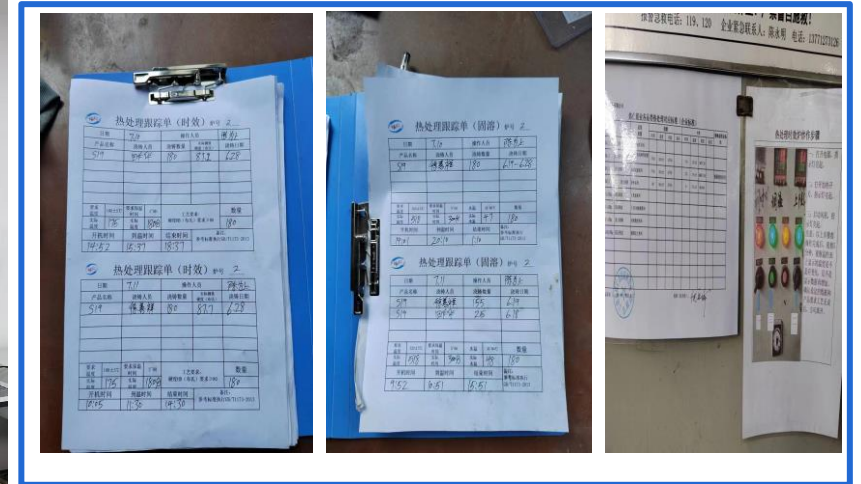
布氏硬度计
Brinell hardness tester



洛氏硬度计
rockwell hardness tester



电脑控制拉力机
Computer controlled tensile machine



全程记录T6热处理数据并保存备查
Record T6 heat treatment data
throughout the process and save it for
future reference

产品过程控制... Product Process Control...

表面处理、喷涂工序 Surface treatment and painting processes

配套的硬件设备，是保证产品性能的首要条件，同时也能满足客户的不同需求

The supporting hardware equipment is the primary condition to ensure product performance, while also meeting the different needs of customers

抛丸流水线 Shot blasting assembly line



喷涂流水线 Spray painting assembly line



膜厚仪 film thickness gauge



百格刀 Cross-Cut Tester



盐雾试验机 Salt spray testing machine



产品过程控制..... Product Process Control.....

金加工工序 Metal processing process

配套的硬件设备，是保证产品性能的首要条件，同时也能满足客户的不同需求

The supporting hardware equipment is the primary condition to ensure product performance, while also meeting the different needs of customers

数控车床、加工中心 CNC machine tools and machining centers



设备一流、齐全，精度可控，方能制造出高品质的产品

High end equipment, complete equipment, and controllable accuracy are necessary to manufacture high-quality products

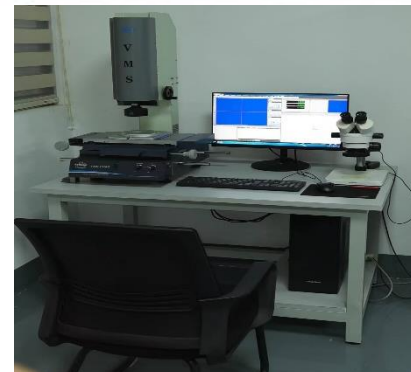
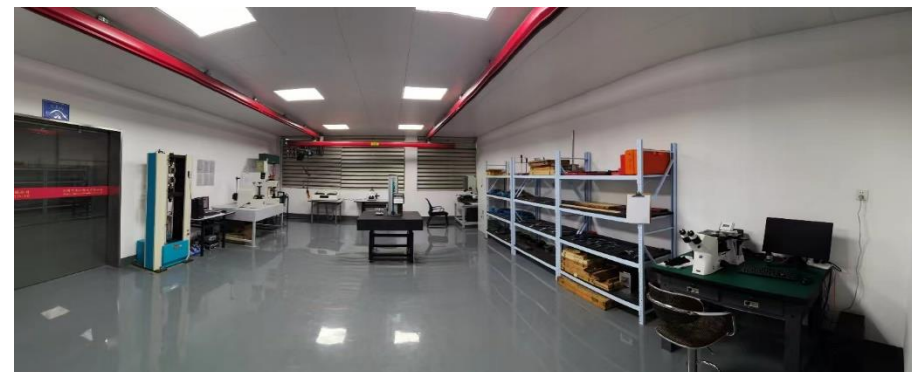
产品过程控制..... Product Process Control.....

综合检测工序 Comprehensive testing process

配套的硬件设备，是保证产品性能的首要条件，同时也能满足客户的不同需求

The supporting hardware equipment is the primary condition to ensure product performance, while also meeting the different needs of customers

综合理化室 Comprehensive Physical and Chemical Room



设备一流、齐全，精度可控，方能制造出高品质的产品

High end equipment, complete equipment, and controllable accuracy are necessary to manufacture high-quality products

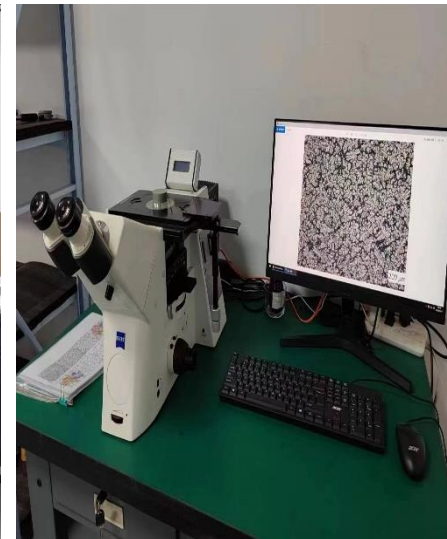
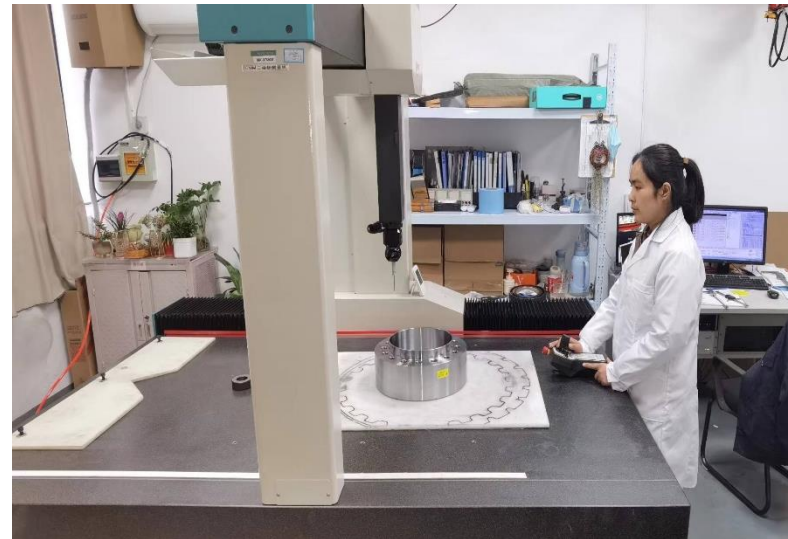
产品过程控制..... Product Process Control.....

综合检测工序 Comprehensive testing process

配套的硬件设备，是保证产品性能的首要条件，同时也能满足客户的不同需求

The supporting hardware equipment is the primary condition to ensure product performance, while also meeting the different needs of customers

综合理化室 Comprehensive Physical and Chemical Room



设备一流、齐全，精度可控，方能制造出高品质的产品

High end equipment, complete equipment, and controllable accuracy are necessary to manufacture high-quality products



SECTION · 03

合作伙伴

cooperative partner

合作伙伴. cooperative partner .

客户名称
Customer Name

产品名称
Product name

照片
photo

行业
industry



Reich Drive Systems(Shanghai) Co.,Ltd.

磊驰传动技术（上海）
有限公司

Reich Drive
Systems(Shanghai)
Co.,Ltd.

法兰

Flansch



联轴器配件

Coupling accessories

合作伙伴. cooperative partner.

客户名称
Customer Name

产品名称
Product name

照片
photo

行业
industry



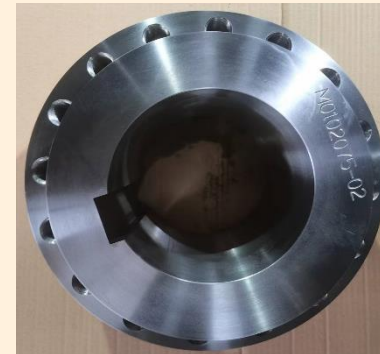
Reich Drive Systems(Shanghai) Co.,Ltd.

磊驰传动技术 (上海)
有限公司

Reich Drive
Systems(Shanghai)
Co.,Ltd.

法兰

HUB



联轴器配件

Coupling accessories

合作伙伴. cooperative partner .

客户名称
Customer Name

产品名称
Product name

照片
photo

行业
industry



博世 (宁波) 轻型电动车电机有限公司

Bosch (Ningbo)e-Scooter Motor Co.,Ltd.

电动摩托车轮毂
Electric motorcycle wheel hub



电动车电机
Electric vehicle motor

合作伙伴. cooperative partner.

客户名称
Customer Name

产品名称
Product name

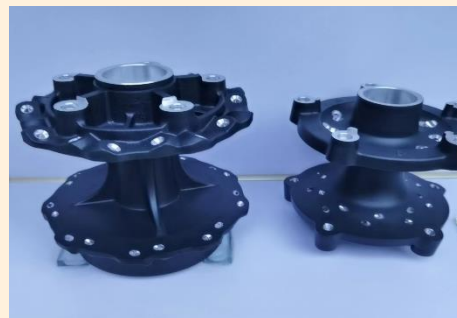
照片
photo

行业
industry



鼎镁新材料科技股份有
限公司
(BMW公司供应商
BMW Supplier)

摩托车轮毂
motorcycle wheel



摩托车配件
motorcycle
accessories

合作伙伴. cooperative partner .

客户名称
Customer Name

产品名称
Product name

照片
photo

行业
industry



苏州八方电气股份有限
公司
(KTM供应商
KTM Supplier)

电动车轮毂
Electric vehicle hub



电动车配件
Electric vehicle
accessories

合作伙伴. cooperative partner .

客户名称
Customer Name

产品名称
Product name

照片
photo

行业
industry

西玛梅达

**(特斯拉公司供应商
Tesla Supplier)**

组合导论

**Combination guide
wheel**



**新能源汽车
New energy vehicle**

合作伙伴. cooperative partner.

客户名称
Customer Name

产品名称
Product name

照片
photo

行业
industry



苏州华亚智能科技股份
有限公司
(西门子公司供应商
Siemens supplier)

医疗上台面
Medical tabletop

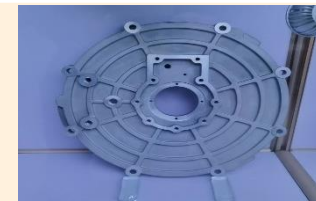


医疗器具
Medical Instrument



江苏天龙车辆部件有限
公司
(比亚迪公司供应商
BYD Supplier)

新能源汽车发动机壳体
New energy vehicle
engine housing



新能源汽车
New energy vehicle

合作伙伴. cooperative partner .

客户名称
Customer Name

产品名称
Product name

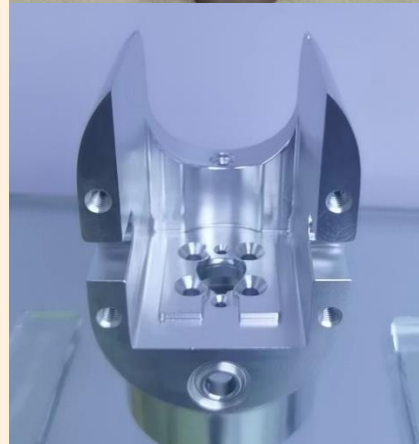
照片
photo

行业
industry

科禄格

上海科禄格通风设备有限公司
<http://www.krugerchina.com/>

风力设备
wind power
installation



通风设备
ventilation system

2023年通过了IATF16949-2016汽车行业的质量管理体系认证





谢谢浏览

The End